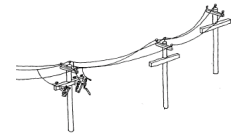


DISTRIBUTION COMMISSIONING FORM (DCF) 1.1 – High voltage overhead powerlines



Purpose: This instruction covers the testing and commissioning of all replacements or new installations of high voltage overhead powerlines (three phase and single phase).

For more information refer to the *Distribution Commissioning Manual* ([EDM 34137510](#))

Address/Pole No:		Work Package No:	
SPIDAWeb Pick ID/Pole No:	From:	To:	

1. Conductor Tension Check

Tension the conductors as per the conductor tension table and record the details	Date Tensioned		Conductors at correct tension:
	Conductor Size and Type		
	Conductor Temperature	°C	
	Ruling Span (Bay) Length	meters	
	Tension (dynamometer)	kg	
	Beat Bay Length	meters	
	Tension (Beat Method)	seconds per 5 wave return	

2. Installation and Construction Checks

Inspect the constructed line and carry out the following checks:	Ensure that the earth resistance test results at all earth points are acceptable.	
	Check that the construction complies with the distribution construction standards and applicable design drawings.	
	Check that the structures are numbered and labelled correctly.	
	Check the conductor arrangement and ensure correct clearances from the ground, buildings and trees.	
	Check the conductor for damage and ensure it is secured correctly.	
	Check that all line taps and earth connections are completed correctly and secured.	
	Check that all the groundwork is completed.	

3. Energisation

Energisation of the high voltage overhead line	Confirm that recloser/sectionalizer settings have been applied (if applicable)	
	Confirm that high voltage fuses are the correct rating (if applicable)	
	Confirm all working/program earths removed, and permit cancelled	
	Energise according to switching programme:	
	Confirm phasing-out across open points (where applicable)	
	Complete the switching program	

4. Handover of Responsibility

I hereby certify that items 1 to 3 have been completed with the above results and transfer control to the network operating authority.			
Commissioned by		BNA	
Signature		Date & Time	

1. Ensure the work area is left tidy with no hazards to the public.
2. Hand over responsibility to the operating authority.
3. The completed form must be returned to the project file/work pack.