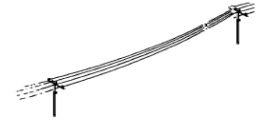


## DISTRIBUTION COMMISSIONING FORM (DCF) 1.2 – Low voltage overhead lines

**Purpose:** This instruction covers the testing and commissioning of all replacements or new installations of low voltage bare overhead lines.



For more information refer to the *Distribution Commissioning Manual* ([EDM 34137510](#))

<b>Address/Pole No:</b>		<b>Work Package No:</b>	
<b>SPIDA Web Pick ID/Pole No(s):</b>	<b>From</b>	<b>To</b>	

### 1. Conductor Tension Test

Tension the conductors as per the conductor tension table and record the details.	Date tensioned		Conductors at correct tension
	Conductor size and type		
	Conductor temperature	°C	
	Ruling span length	meters	
	Tension (dynamometer)	kg	
	Beat span (bay) length	meters	
	Tension (beat method)	Seconds per 5 wave return	

### 2. Installation and Construction Checks

Inspect the constructed line and carry out the following checks:	Check that the construction complies with the distribution construction standards and applicable design drawings.	
	Check that the structures are numbered and labelled correctly.	
	Check the conductor arrangement and ensure correct clearances from the ground, buildings and trees.	
	Check the conductor for damage and ensure it is secured correctly.	
	Check that all line taps and neutral connections are completed correctly and secured.	
	Check that all the groundwork is completed.	

### 3. Energisation

Energisation of the overhead low voltage network.	Ensure that all short-circuiting equipment has been removed and permit cancelled.	
	Check that the low voltage fuses are correct rating (if applicable).	
	Energise the circuit in accordance with the low voltage switching program.	
	If the LV network is to be interconnected with another LV network, phase out at the normally open point; otherwise phase out as required.	
	Record the switching program number.	
	Conduct a service connection test on all installations where the service connections have been disturbed.	

### 4. Handover of Responsibility

I hereby certify that items 1 to 3 have been completed with the above results and transfer control to the network operating authority.			
Commissioned by		BNA	
Signature		Date & Time	

1. Ensure the work area is left tidy with no hazards to the public.
2. Hand over responsibility to the operating authority.
3. The completed form must be returned to the project file/work pack.