

How to read your meter

Three-Phase Meter

For Meter Code 0640 and 0642

The 0640/0642 is an electronic three-phase meter capable of two way communication between the Meter and Western Power and is programmable for a variety of tariffs including bi-directional flow, e.g. for grid-connected rooftop solar.

As part of Advanced Metering Infrastructure (AMI) the 0640/0642 ensures accurate meter readings, early detection of power safety issues, reduced wait times for reconnection and improved Quality of Service monitoring to improve network reliability.

1. Test LEDs (WH and VArh)

The light (LED) will pulse (on & off) when electricity is being used, and these pulses get faster as electricity consumption increases.

2. Optical Port

This is the meter's infrared (IR) device, where authorised Western Power personnel download the data from the meter using an optical probe cable and metering software.

3. LCD

This is the display which shows the total electricity consumption, and for the smart power tariff, it will also display the electricity consumption of the different tariff rates. The meter is also programmed to display the time and date.

4. Nameplate Label

It shows the basic technical information about the meter and its serial number. Each meter is assigned a unique individual serial number, and the first four digits are the meter code followed by a six digit serial number.

5. Terminal Cover Seal

The meters are sealed on the main cover at the manufacturing plant. This seal prevents unauthorised personnel from accessing the internal components of the meter.

6. Alternate Display Scroll Button

This button is used to scroll the register displays in the sequence that they have been programmed in the meter. Each press of the scroll button will show the next register display.

7. ARM Breaker Reconnect

This is used to control or reconnect the meter after disconnection of supply. This meter can be connected remotely via the communication module in the event of non-payment.

10. Phase Indicators

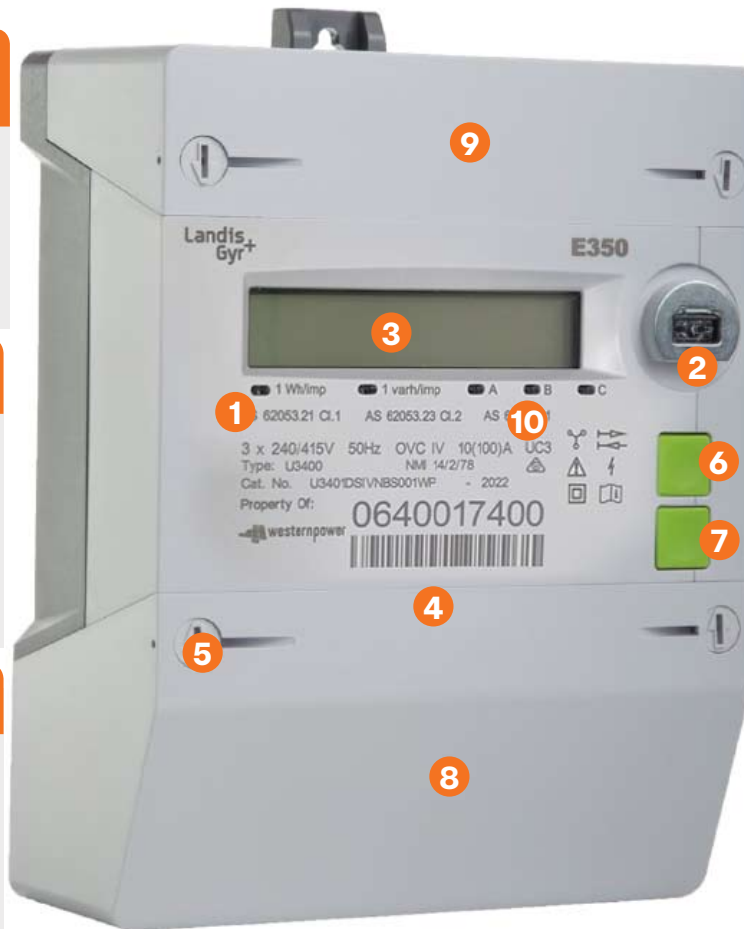
These indicate the active voltage presents of each phase. A, B and C.

9. Communication Module Cover

It protects the communication module of the meter, and provides easy access for technician during maintenance.

8. Terminal Cover

It protects the live meter terminals and screws from unauthorised access and safety of customer and personnel.



How to read your meter

Three-Phase Meter

For Meter Code 0640 and 0642

A. Uni-directional and Consumption

The LCD display registers scroll automatically every 6 seconds. If you wish to skip the current display, you simply press the upper green button (1) quickly to skip to next display. For each press of the button, the display scrolls / moves to the next one.

- for Total Consumption read the LCD display reading on channel "07".
- If your Tariff requires other channels to be read, this will be indicated in the Self Read Portal, or the phone system will request the extra channels.

Channel/ Display ID	Channel	Meter Display
04	Time	hh:mm
05	Date	dd:mm:yy
07	Total kWh Consumption	000000
88	Test Display	888888

B. Bi-directional DEBS Tariff - Generation

In order to read the kWh generation registers/ channels, press the upper green button (1) on the meter and hold for two seconds until "Alt 1" is displayed on the LCD display, which is the alternate 1 display mode. Once the "Alt 1" is displayed, the meter will start to scroll through your different generation channels, automatically pausing briefly for approximately six seconds on each display so that you can read the display readings.

- Your DEBS Tariff requires "47, 50 and 60".

Channel/ Display ID	Channel	Meter Display
47	Total kWh Generation	000000
50	kWh Generation - Total Current Rate A (DEBS Tariff)	000000
60	kWh Generation - Total Current Rate C (DEBS Tariff)	000000